

Balloon
Pos.
Qtd.

A

B

C

D

E

F

G

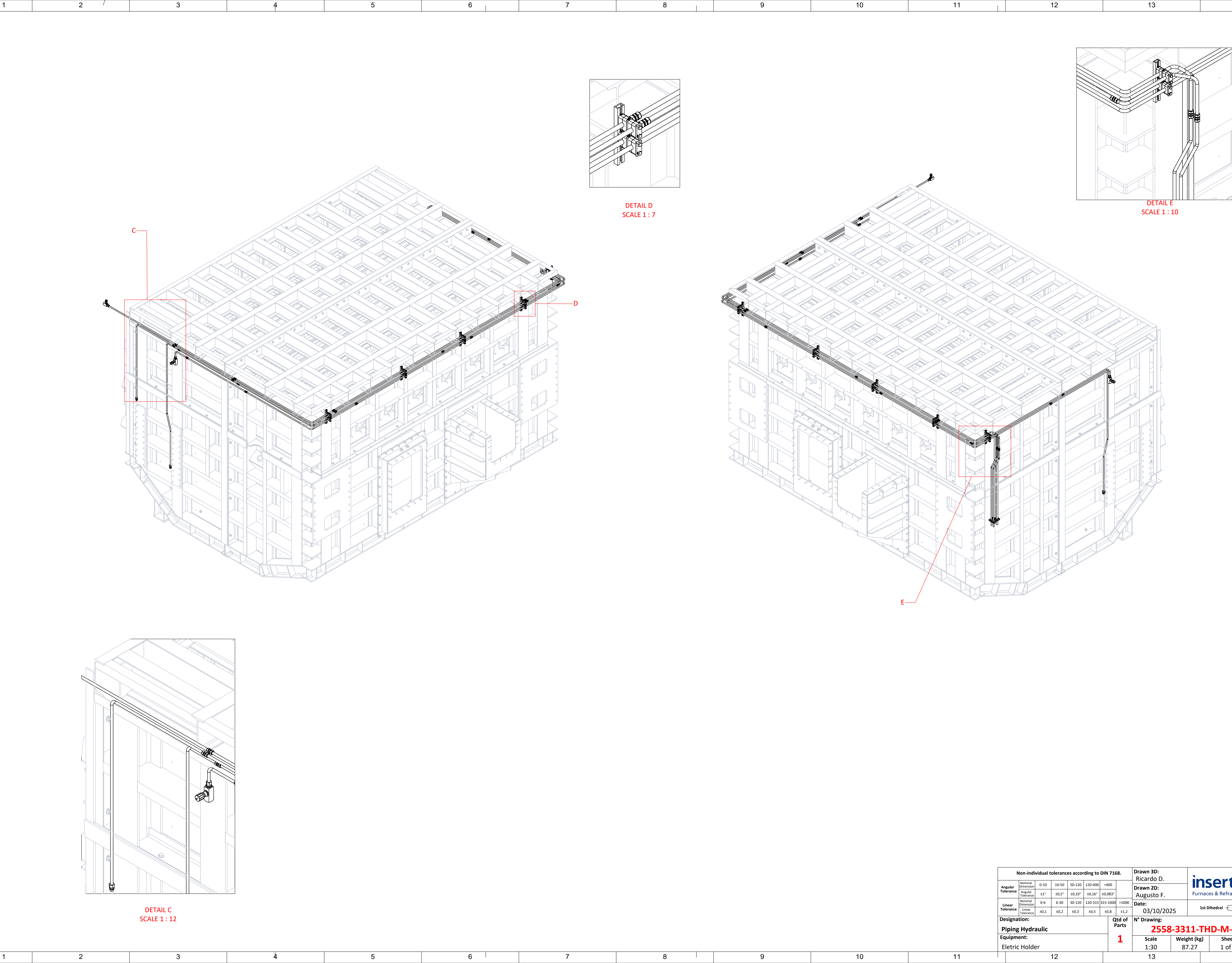
H

I

J

Before manufacturing this
drawing must be reviewed by the
Industrial Ltda and must
not be used or reproduced
without authorization.

This drawing belongs
to the Industrial Ltda and must
not be used or reproduced
without authorization.



A

B

C

D

E

F



G

H

I

J

K

Non-individual tolerances according to DIN 7168.							Drawn 3D: Ricardo D.		 Furnaces & Refractories		
Angular Tolerance	Nominal Dimension	0-10	10-50	50-120	120-400	>400	Drawn 2D: Augusto F.				
	Angular Tolerance	±1°	±0,5°	±0,33°	±0,16°	±0,083°	Date:	03/10/2025	1st Dihedral 	ISO 5456-2	
Linear Tolerance	Nominal Dimension	0-6	6-30	30-120	120-315	315-1000					
	Linear Tolerance	±0,1	±0,2	±0,3	±0,5	±0,8					±1,2
Designation: Piping Hydraulic							Qtđ of Parts 1	N° Drawing: 2558-3311-THD-M-120			
Equipment: Elettric Holder								Scale	Weight (kg)	Sheet	Format
								1:30	87.27	1 of 2	A1

Balloon
Pos.
Qtd.

A

B

C

D

E

F

G

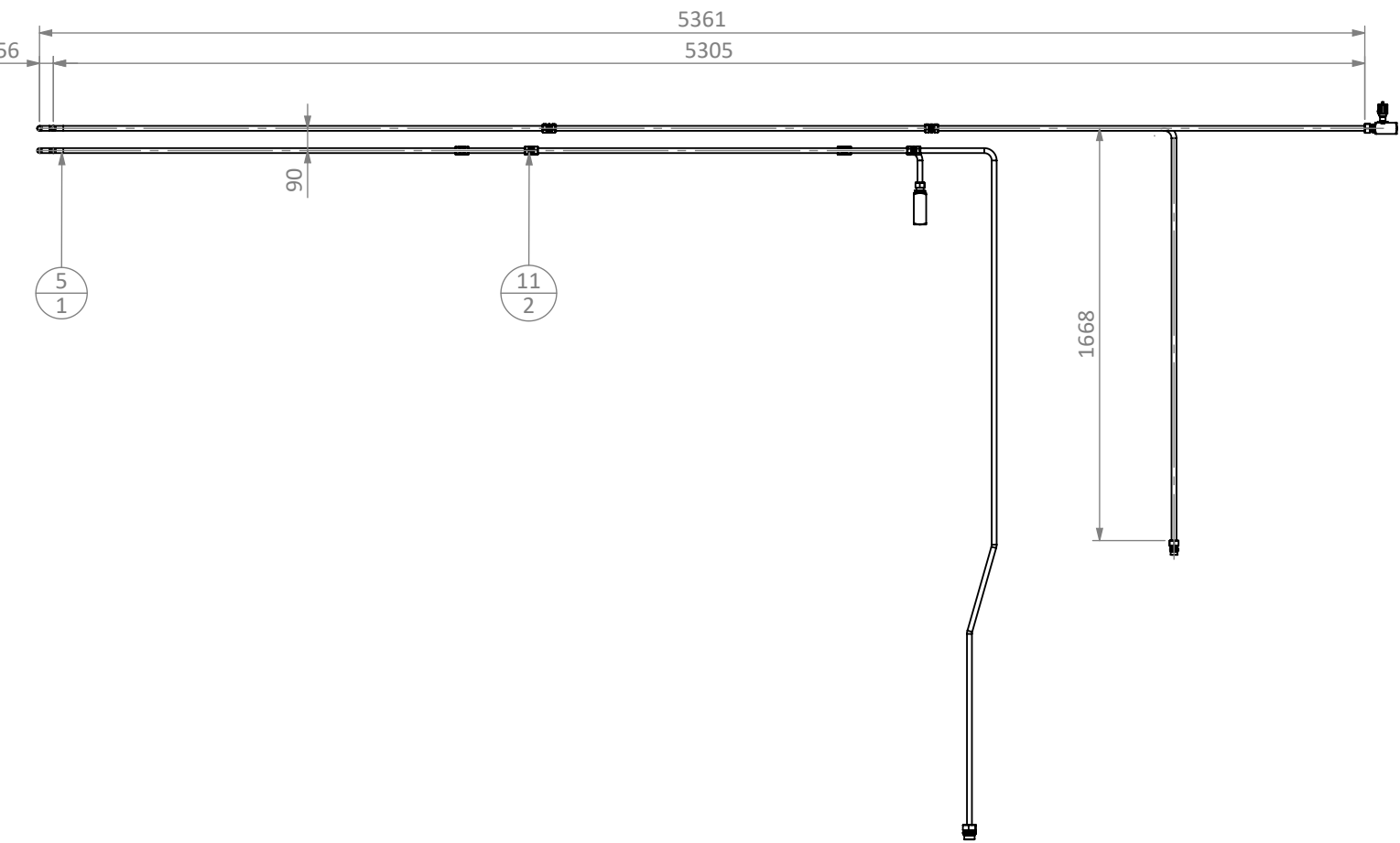
H

I

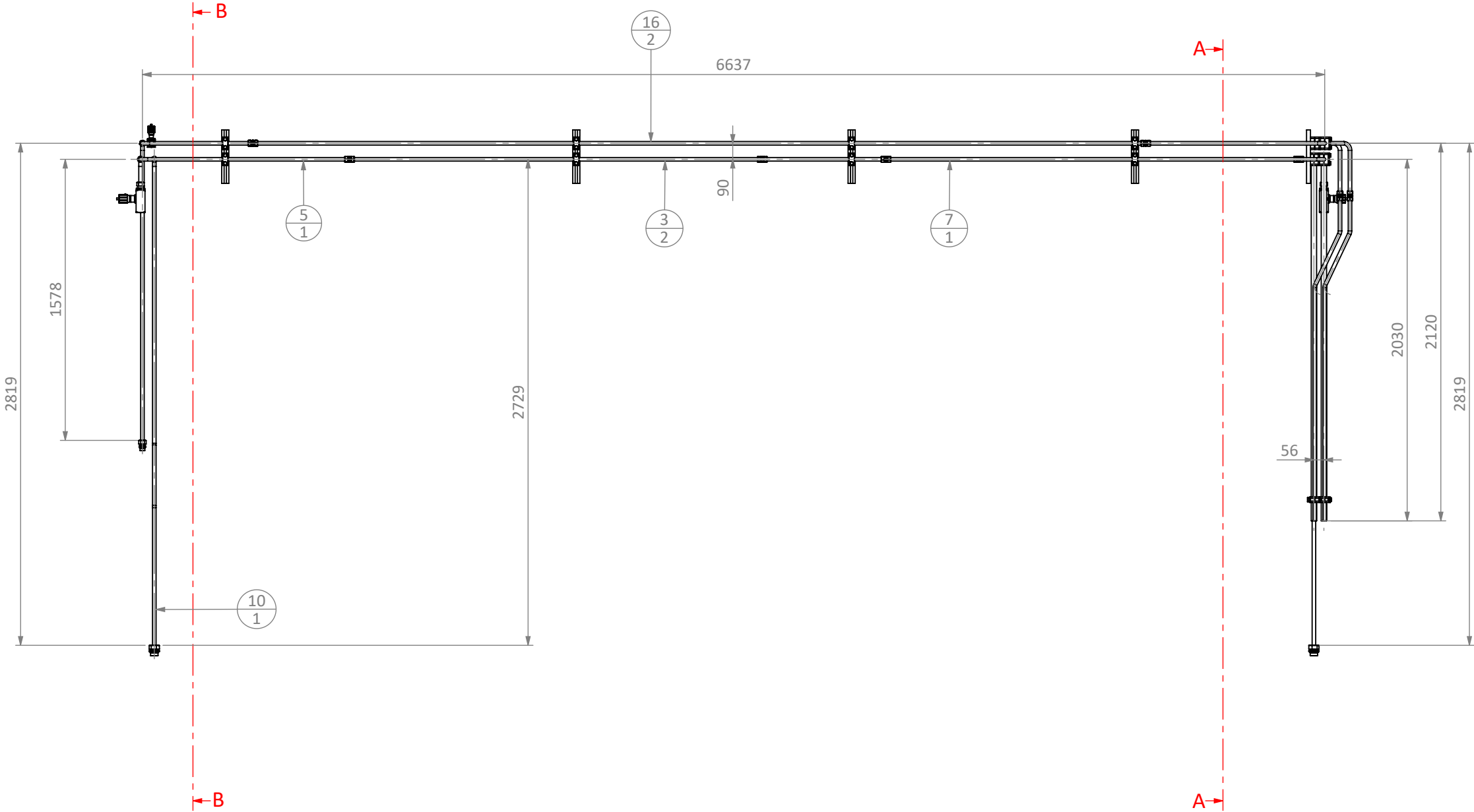
J

Before manufacturing this
drawing must be reviewed by
the responsible person and
approved by the responsible
person. If necessary, the
drawing must be reviewed and
clarified.

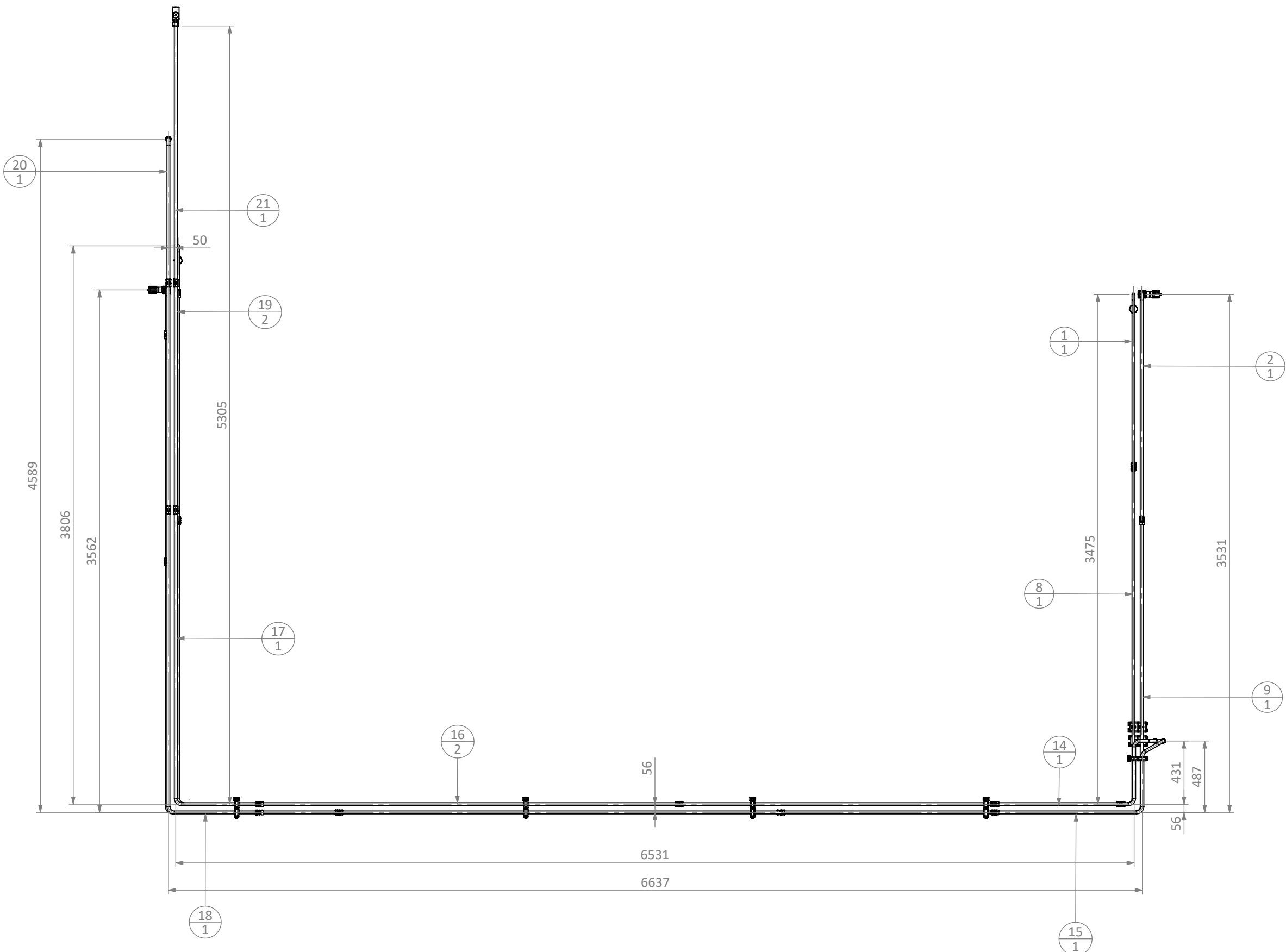
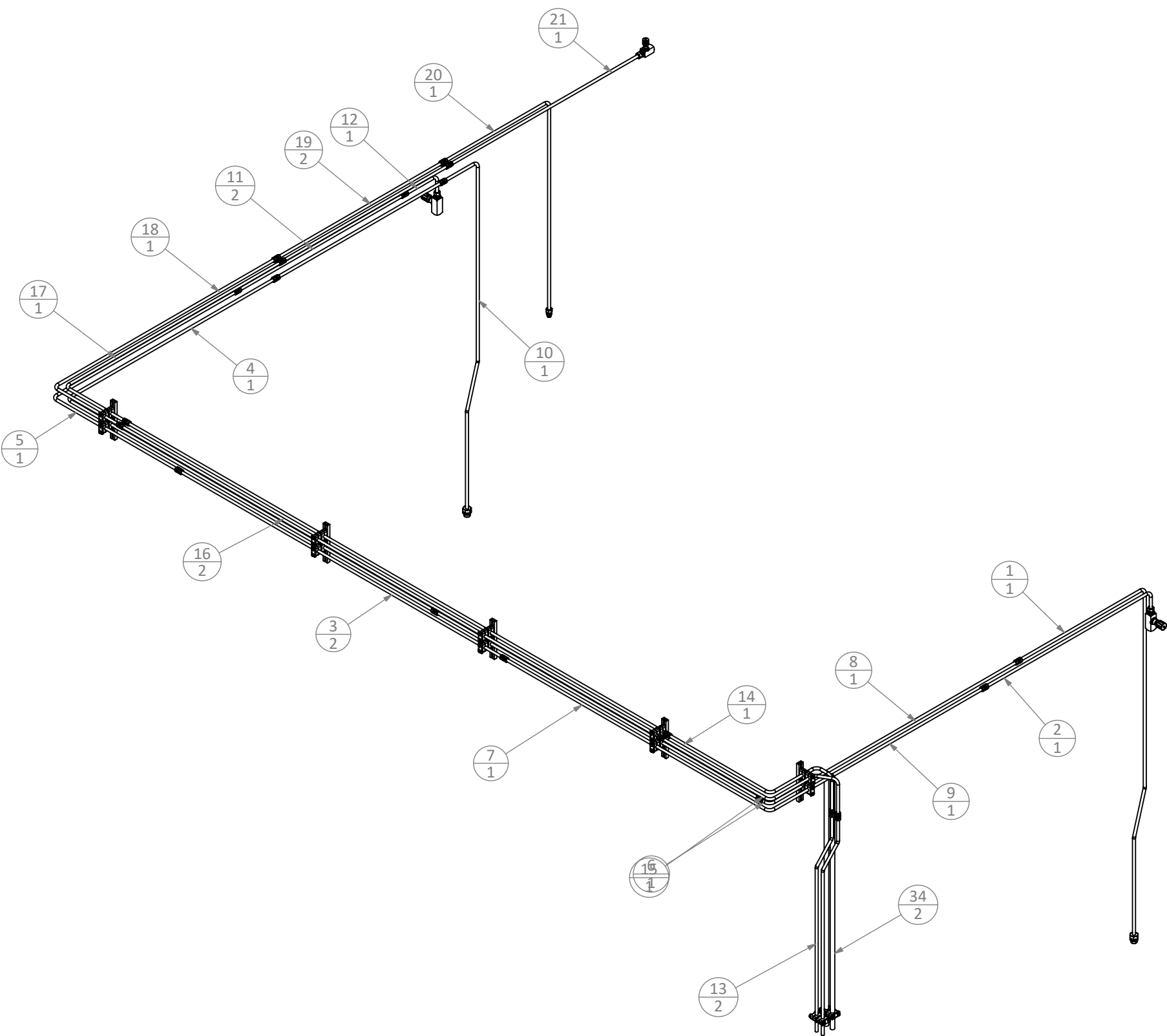
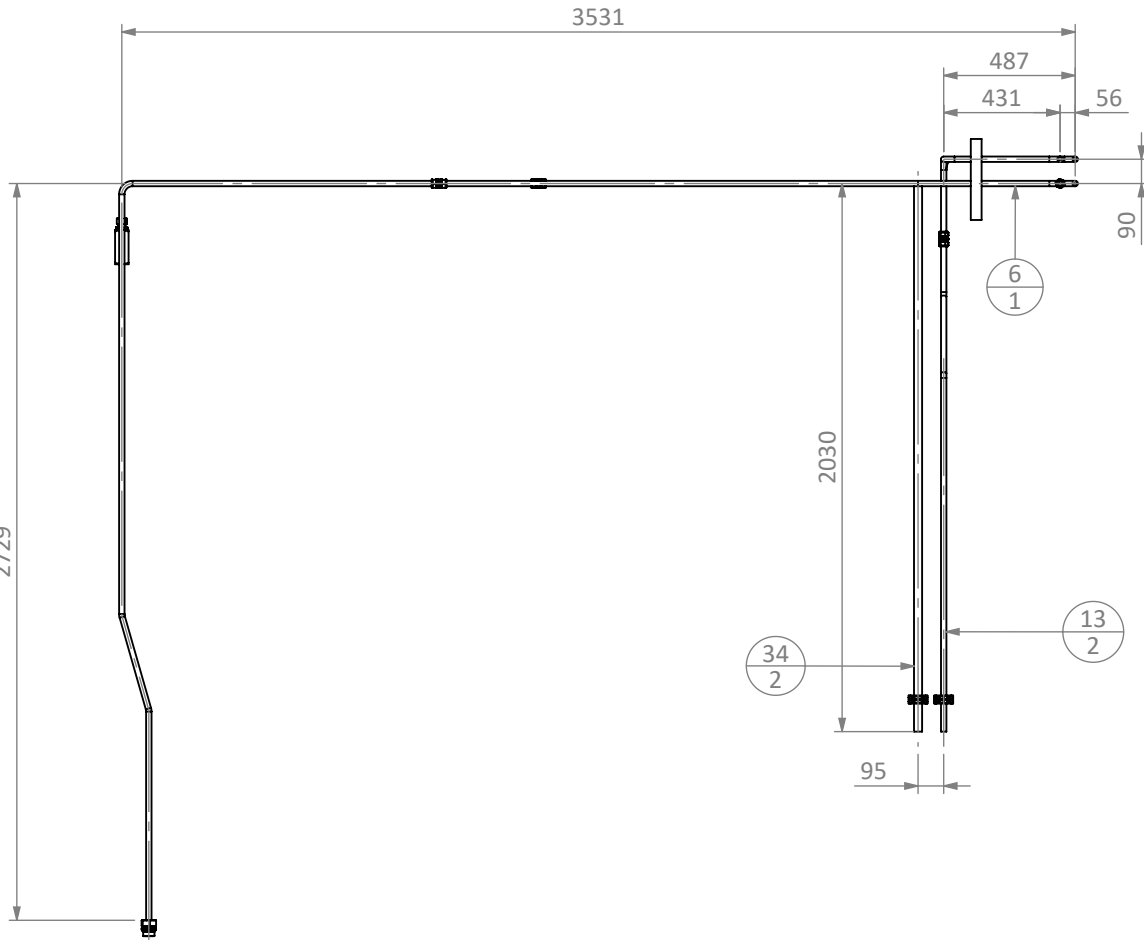
This drawing belongs
to the company and must
not be used or reproduced
without authorization.





SECTION B-B



SECTION A-A



34	2	2558-3311-THD-M-120-0014	TUBING HYD 30 x 4 - EN10216-5	2020	AISI 316	10.56Kg
21	1	2558-3311-THD-M-120-0028	TUBING HYD 20 x 2.5 - EN10216-5	1768.5	AISI 316	1.94Kg
20	1	2558-3311-THD-M-120-0027	TUBING HYD 20 x 2.5 - EN10216-5	2647	AISI 316	2.91Kg
19	2	2558-3311-THD-M-120-0026	TUBING HYD 20 x 2.5 - EN10216-5	1536	AISI 316	3.38Kg
18	1	2558-3311-THD-M-120-0025	TUBING HYD 20 x 2.5 - EN10216-5	2653	AISI 316	2.92Kg
17	1	2558-3311-THD-M-120-0024	TUBING HYD 20 x 2.5 - EN10216-5	2547	AISI 316	2.8Kg
16	2	2558-3311-THD-M-120-0023	TUBING HYD 20 x 2.5 - EN10216-5	5000	AISI 316	11Kg
15	1	2558-3311-THD-M-120-0022	TUBING HYD 20 x 2.5 - EN10216-5	1820	AISI 316	2Kg
14	1	2558-3311-THD-M-120-0021	TUBING HYD 20 x 2.5 - EN10216-5	1755	AISI 316	1.93Kg
13	2	2558-3311-THD-M-120-0019	TUBING HYD 20 x 2.5 - EN10216-5	1850	AISI 316	4.06Kg
12	1	2558-3311-THD-M-120-0018	TUBING HYD 20 x 2.5 - EN10216-5	433	AISI 316	0.48Kg
11	2	2558-3311-THD-M-120-0017	TUBING HYD 20 x 2.5 - EN10216-5	1536	AISI 316	3.38Kg
10	1	2558-3311-THD-M-120-0015	TUBING HYD 20 x 2.5 - EN10216-5	3056	AISI 316	3.37Kg
9	1	2558-3311-THD-M-120-0013	TUBING HYD 20 x 2.5 - EN10216-5	1400	AISI 316	1.54Kg
8	1	2558-3311-THD-M-120-0012	TUBING HYD 20 x 2.5 - EN10216-5	1768	AISI 316	1.94Kg
7	1	2558-3311-THD-M-120-0011	TUBING HYD 20 x 2.5 - EN10216-5	3058	AISI 316	3.39Kg
6	1	2558-3311-THD-M-120-0009	TUBING HYD 20 x 2.5 - EN10216-5	588,832	AISI 316	0.66Kg
5	1	2558-3311-THD-M-120-0008	TUBING HYD 20 x 2.5 - EN10216-5	2894	AISI 316	3.14Kg
4	1	2558-3311-THD-M-120-0007	TUBING HYD 20 x 2.5 - EN10216-5	4968	AISI 316	5.88Kg
3	2	2558-3311-THD-M-120-0003	TUBING HYD 20 x 2.5 - EN10216-5	3000	AISI 316	6.6Kg
2	1	2558-3311-THD-M-120-0002	TUBING HYD 20 x 2.5 - EN10216-5	1671	AISI 316	1.84Kg
1	1	2558-3311-THD-M-120-0001	TUBING HYD 20 x 2.5 - EN10216-5	3922	AISI 316	4.31Kg

Pos.	Qty.	N° drawing					Description	Dimensions	Material	Weight			
Non-individual tolerances according to DIN 7168.											Drawn 3D: Ricardo D.	 Furnaces & Refractories	
Angular Tolerance	Normal	0-10	10-50	50-120	120-400	+400	Drawn 2D: Augusto F.						
	Angular Tolerance	+11°	+0,5°	+0,33°	+0,16°	+0,083°							
Linear Tolerance	Normal	0-6	6-30	30-120	120-315	315-1000	Date:	03/10/2025	1st Dihedral	ISO 5456-2			
	Linear Tolerance	+0,1	+0,2	+0,3	+0,5	+0,8	+1,2						
Designation:							QtD of Parts	N° Drawing:					
Piping Hydraulic							1	2558-3311-THD-M-120					
Equipment:								Scale	Weight (kg)	Sheet	Format		
Electric Holder								1:28	87.27	2 of 2	A1		

K